

Charlton®

STRONG-ARM



2 1/4 TONNE TROLLEY JACK

MODEL NO: CTJ2250LP

PART NO: 7623070

OPERATION & MAINTENANCE INSTRUCTIONS



ORIGINAL INSTRUCTIONS

GC0719 ISS -2

INTRODUCTION

Thank you for purchasing this CLARKE Trolley Jack.

Before attempting to use this product, please read this manual throughout and follow the instructions carefully. Thoroughly familiarise yourself with this product & its operation in order to ensure the safety of yourself and others around you. In doing so, you can look forward to the product giving you long and satisfactory service.

GUARANTEE

This product is guaranteed against faulty manufacture for a period of 12 months from the date of purchase. Please keep your receipt which will be required as proof of purchase. This guarantee is invalid if the product is found to have been abused or tampered with in any way, or not used for its intended purpose.

Faulty goods should be returned to their place of purchase, no product can be returned to us without prior permission. This guarantee does not effect your statutory rights.

SPECIFICATION

Model number	CTJ2250LP
Part number	7623070
Length (not including handle):	560 mm
Width	225 mm
Height	150 mm
Height of saddle from floor (minimum)	80 mm
Height of saddle from floor (maximum)	380 mm
Weight	13.7 kg
Rated Load	2.25 tonne
Oil capacity	115 ml
No of strokes from min to max height	36
Distance raised per stroke	7.9 mm (average)

GENERAL SAFETY PRECAUTIONS

1. ALWAYS read and ensure you fully understand the following precautions and the hazards associated with this product. Do not allow anyone who has not read these instructions to use the jack.
2. Only use this jack for its intended purpose.
3. NEVER carry out any modifications to this product. If experiencing difficulty of any kind consult your local dealer.

WORK AREA

1. NEVER use the jack on sloping surfaces, only on level ground. The jack may move away slightly as soon as it lifts the tyre from the ground.
2. DO NOT start the vehicle engine with the jack in use.
3. This jack is for lifting only. DO NOT move a load using the jack as a dolly.
4. Ensure the load is taken by the full saddle and that the point of lift on the load is of sufficient strength to support the full load adequately.
5. Never allow children or bystanders in the area while the jack is in use.
6. NEVER work underneath a vehicle supported only by this product. If working under a vehicle, always use axle stands designed for the purpose.
7. Ensure the jack is on a firm solid base and that there is no likelihood of it slipping when under load.
8. Ensure that all personnel are well clear of a load being raised or lowered.

SERVICING & REPAIRS

1. Check the jack for damage before use and do not use if damaged. If in doubt, DO NOT use. Consult your local dealer.
2. ALWAYS use spare parts supplied by Clarke International. Using non-standard parts could be extremely dangerous.
3. Ensure the jack is properly maintained at all times and that no damage is allowed to weaken any part of it. Do not use if an oil leak is apparent.
4. When necessary, have your jack serviced or repaired by a qualified technician using identical replacement parts. This will ensure that the safety of the jack is maintained
5. NEVER exceed the rated load or use the jack if it has been subjected to excess load (over 2.25 tonne). The jack should be removed from service immediately and fully inspected by qualified personnel and passed as serviceable before further use.

Please keep these instructions in a safe place for future reference

OPERATION

Before use, visually inspect the jack for oil leaks or any other sign of damage. Should any be apparent, have the jack inspected and repaired by a qualified technician before use.

The CTJ2250LP trolley jack is equipped with an operating handle which can also be used as a wheel brace, in conjunction with the double-ended sockets carried in the socket holder..



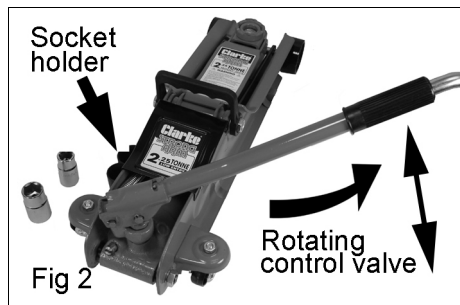
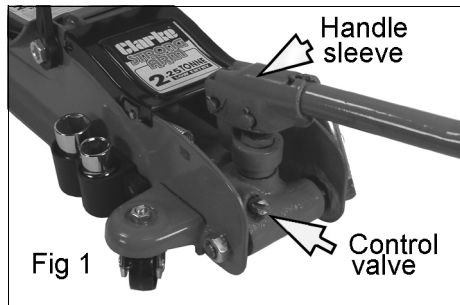
WARNING: NEVER WORK ON THE VEHICLE WHEN SUPPORTED ONLY BY A JACK. THIS IS A HIGHLY DANGEROUS PRACTICE. THE VEHICLE MUST BE SUPPORTED ON AXLE STANDS, OR SUITABLE SUPPORTS, BENEATH THE JACKING/SUPPORT POINTS RECOMMENDED BY THE VEHICLE MANUFACTURER. THERE SHOULD BE NO LOAD ON THE JACK.

1. Ensure the vehicle to be raised is stable and on firm level ground with the supporting wheels chocked.
2. Position the jack so that the saddle is directly beneath the lifting point.
 - Consult the vehicle handbook to determine suitable lifting points.
3. Engage the handle with the control valve shown in Fig 1 and turn it clockwise to close the valve
4. Insert the handle into the handle sleeve and pump the handle to raise the saddle until it reaches the vehicle lifting point.

NOTE: The control valve is able to rotate through 360 deg as shown in Fig 2, & can therefore be operated from any position.

5. Take care that there are no obstructions to prevent a clean lift. Keep all personnel at a safe distance before continuing to pump the handle to raise the vehicle.

NOTE: The jack may move slightly during operation. It is important therefore, that the floor is clean and completely free from debris.



6. Position axle stands directly beneath suitable supporting points below the vehicle, before engaging the handle with the control valve and very gently twisting the handle anticlockwise.
 - This will open the control valve to lower the load onto the stands.
7. To stop it lowering, turn the handle clockwise again. Always avoid a rapid descent by turning the handle slowly.
8. Carefully lower the vehicle onto the axle stand, checking constantly, preferably with an assistant, that the vehicles supporting point rests snugly and cleanly on the stand, and that the supporting stand is stable before all the weight is taken.

NOTE: Ensure this operation is carried out under complete control. DO NOT allow the load to drop suddenly as this could damage internal parts.
9. Completely remove the jack from the vehicle.

MAINTENANCE

PURGING AIR FROM THE SYSTEM

If air bubbles become trapped inside the hydraulic system, the efficiency of the jack will be reduced. Any air can be purged from the system as follows.

1. Turn the control valve counter-clockwise and remove the filler plug.
2. Pump the handle several times to purge air from the system.
3. Replace the filler plug, then turn the control valve clockwise and test the jack. If efficiency is still low, check the oil level as below.

CHECKING THE OIL LEVEL

If the jack has been stored for long periods, check for oil leaks before use. If necessary, check the oil level as follows:

1. Ensure the jack is fully lowered by using the handle to turn the control valve fully anticlockwise.
2. Lift up the cover plate and remove the oil filler plug on the top of the ram assembly. A large cross headed screwdriver is required.
 - The oil should be almost level with the bottom of the oil filler hole.
 - Top up using Clarke Hydraulic Oil (p/n 3050830 for 1 litre).

OIL REPLACEMENT

1. With the jack lowered, remove the filler plug. Tilt the jack onto its side and drain the old oil into a container.

2. Return the jack to upright and refill with hydraulic oil up to the lower rim of the filler hole.
3. Purge any air from the system and replace the filler plug.
4. Dispose of old oil appropriately and be sure to wipe up any spillage.

GENERAL CARE

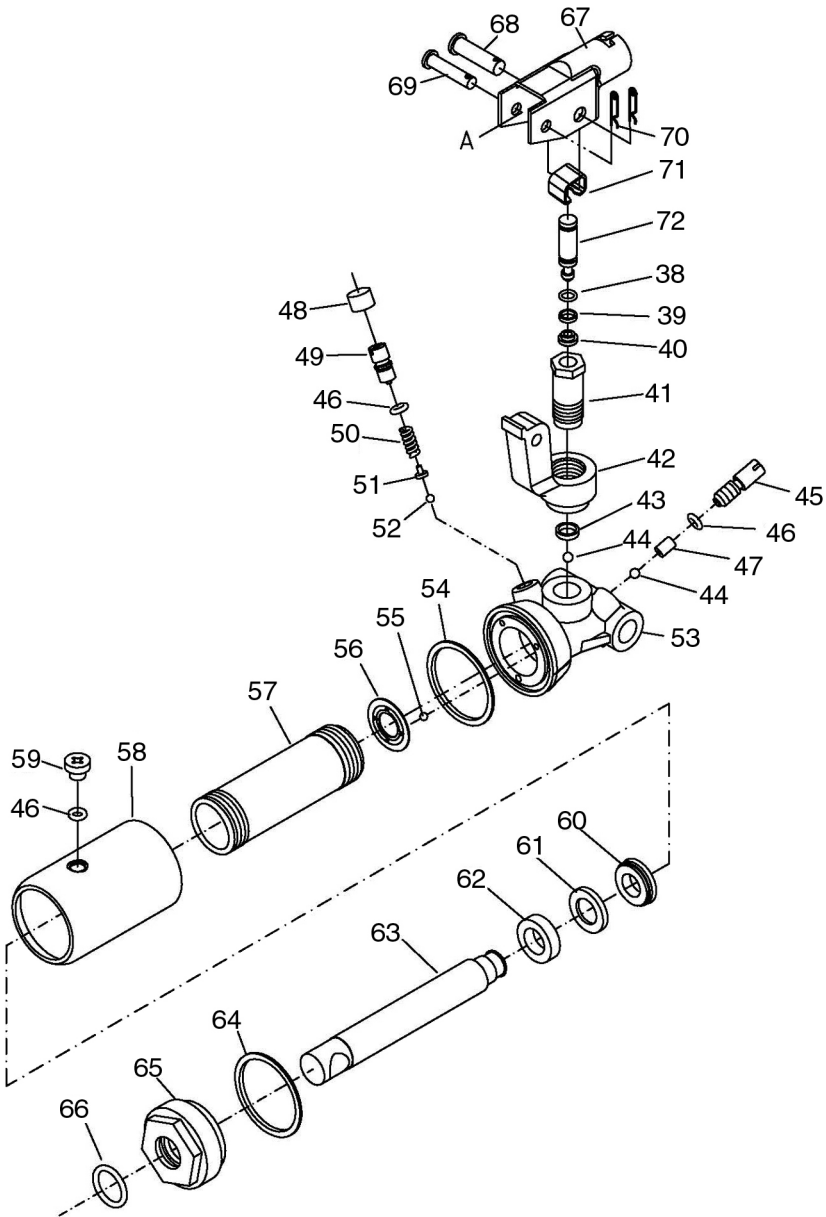
1. Periodically lubricate the hinges, front wheels & rear castors with light oil.
2. Store in a dry location with the arm in its lowest position.
3. In the event of damage or broken components, replacements are available from Clarke Parts & Service.

TROUBLESHOOTING

PROBLEM	CAUSE	SOLUTION
Jack will not lift the rated load	Low oil level	See 'Checking the Oil Level'
	Release valve not closed	Turn the release knob fully clockwise
	Air in the hydraulic system	Purge the system as on page 5
Jack lower when under load	Release valve not fully closed	Turn the release knob fully clockwise
	Air in the hydraulic system	Purge the system as on page 5
Pump feels Spongy	Low oil level	See 'Checking the Oil Level'
	Air in the hydraulic system	Purge the system as on page 5
Handle raises or flies back under load	Air in the hydraulic system	Purge the system as on page 5
Jack will not lift full height	Low oil level	See 'Checking the Oil Level'
	Air in the system	Purge the system as on page 5
Jack will not lower completely	Return spring may be faulty	Return to your Clarke dealer for repair

If any of these remedies fail to restore your jack, consult your Clarke dealer.

COMPONENT PARTS - RAM ASSEMBLY

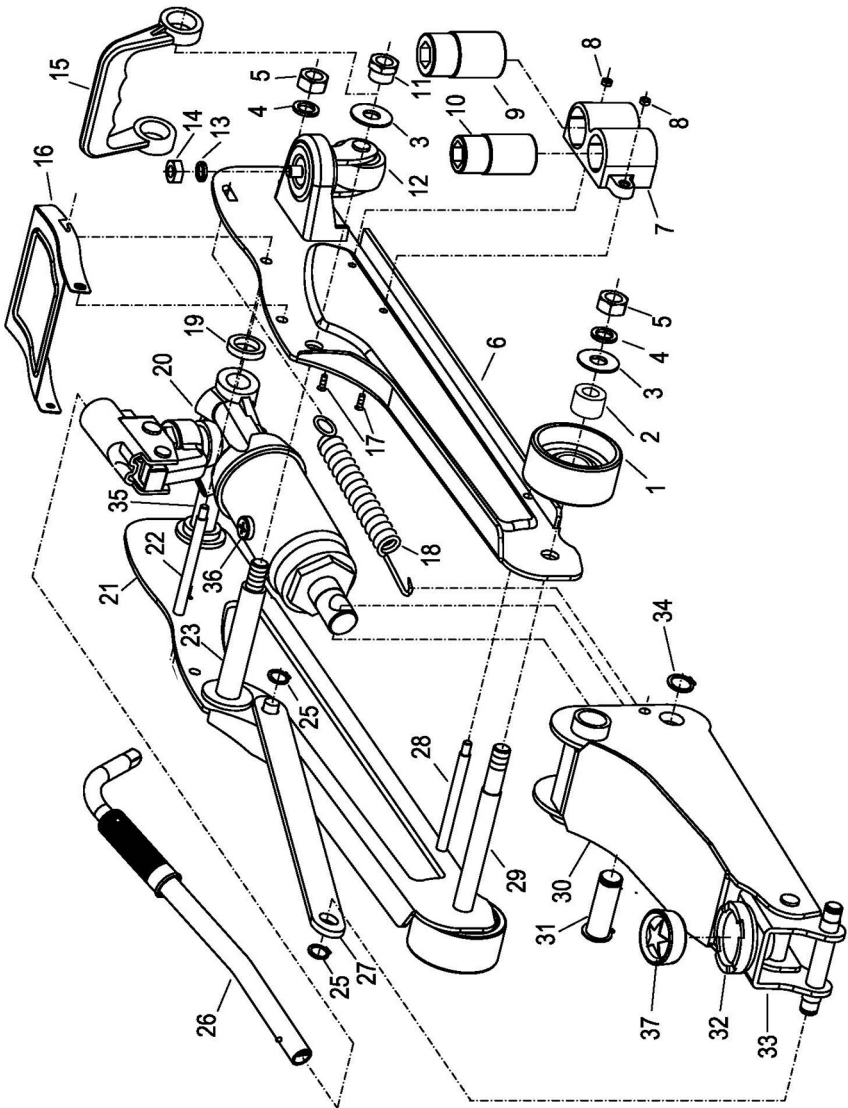


COMPONENT PARTS

	Description
1	Front wheel
2	Bush
3	Flat washer
4	Spring washer
5	Nut M12
6	Left frame
7	Socket holder
8	Nut M5
9	Socket 17/19 mm
10	Socket 21/23 mm
11	Nut
12	Rear castor assembly
13	Spring washer
14	Nut M8
15	Carrying handle
16	Cover
17	Bolt M5 x 15
18	Retaining spring
19	Bush
20	Ram assembly
21	Right frame
22	Tie rod
23	Lifting arm axle
24	Not used
25	Circlip No12
26	Handle/brace
27	Tie plate
28	Shaft

	Description
29	Front axle
30	Lifting arm assembly
31	Centre shaft
32	Saddle
33	Saddle support
34	Circlip No17
35	Ram pivot shaft
36	Filler plug
37	Saddle pad
38	O-ring 7.8 x1.9
39	Back-up ring
40	U-seal
41	Pump cylinder
42	Pump body
43	Swivel
44	Steel ball
45	Release valve
46	O-ring 6x3
47	Release valve pin
48	Safety valve cap
49	Safety valve screw
50	Safety valve spring
51	Safety valve plunger
52	Steel ball 4mm
53	Control valve body
54	Nylon washer
55	Steel ball 3/16"
56	Washer

COMPONENT PARTS - GENERAL ASSEMBLY



COMPONENT PARTS

	Description
57	Ram cylinder
58	Oil reservoir
59	Oil filling plug
60	U-seal
61	O-ring retainer
62	Guide ring
63	Ram piston
64	Nylon washer
65	Reservoir end cap

	Description
66	O-ring 21.7 x 3
67	Handle socket
68	Piston pivot
69	Handle hinge pin
70	Split pin
71	Pump connecting clip
72	Actuating piston
	Hydraulic seal kit

ENVIRONMENTAL PROTECTION

One of the most damaging sources of environmental pollution is oil products. Never throw away used hydraulic oil with domestic refuse or flush it down a sink or drain. Collect all the hydraulic oil in a leak proof container and take it to your local waste disposal site

DECLARATION OF CONFORMITY



Clarke[®]
INTERNATIONAL

Hemnal Street, Epping, Essex CM16 4LG

DECLARATION OF CONFORMITY

This is an important document and should be retained.

We hereby declare that this product(s) complies with the following directive(s):

2006/42/EC Machinery Directive.

The following standards have been applied to the product(s):

BS EN 1494/A1:2008.

The technical documentation required to demonstrate that the product(s) meet(s) the requirement(s) of the aforementioned directive(s) has been compiled and is available for inspection by the relevant enforcement authorities.

The CE mark was first applied in: 2009

Product Description: 2 .25 Tonne Trolley Jack with 17, 19, 21,23mm Sockets.
Model number(s): CTJ2250
Serial / batch Number: N/A
Date of Issue: 28/10/2011

Signed:

J.A. Clarke
Director

A SELECTION FROM THE VAST RANGE OF

Clarke®

QUALITY PRODUCTS

AIR COMPRESSORS

From DIY to industrial, Plus air tools, spray guns and accessories.

GENERATORS

Prime duty or emergency standby for business, home and leisure.

POWER WASHERS

Hot and cold, electric and engine driven - we have what you need

WELDERS

Mig, Arc, Tig and Spot. From DIY to auto/industrial.

METALWORKING

Drills, grinders and saws for DIY and professional use.

WOODWORKING

Saws, sanders, lathes, mortisers and dust extraction.

HYDRAULICS

Cranes, body repair kits, transmission jacks for all types of workshop use.

WATER PUMPS

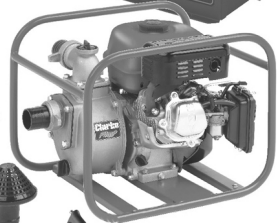
Submersible, electric and engine driven for DIY, agriculture and industry.

POWERTOOLS

Angle grinders, cordless drill sets, saws and sanders.

STARTERS/CHARGERS

All sizes for car and commercial use.



PARTS & SERVICE: 0208 988 7400

E-mail: Parts@clarkeinternational.com or Service@clarkeinternational.com

SALES: UK 01992 565333 or Export 00 44 (0)1992 565335

Clarke® INTERNATIONAL Hemnall Street, Epping, Essex CM16 4LG
www.clarkeinternational.com